



SimVision® Academic Program

Using simulation models, students learn how to design more effective organizations that minimize risks and improve outcomes

Why not design your organization the way engineers design modern structures and vehicles?

- Test it in a *virtual wind tunnel*
- Measure performance under various conditions
- Correct problems and perfect plans before risking time and money on a flawed design.

Breakthrough Technology

SimVision® is the first and only commercial simulator of team behavior and human work performance. It accurately and reliably predicts organization performance so you can:

- Make a project or operation more efficient
- Ensure a team can meet cost, quality, schedule and safety requirements
- Formulate realistic and reliable plans

Extensive Academic and Industrial Validation

SimVision technology is the product of twenty-five years of Stanford University research in organization dynamics, leadership and information flow. It incorporates the actual experiences and results of thousands of people working in hundreds of organizations. More than twenty universities use SimVision for instruction and research in project management, operations and product development. In ten years of commercial use, ePM has proved the applicability of SimVision models in myriad industries and business situations:

- In energy, chemicals, construction, heavy equipment, aerospace, information, telecommunications, software, and financial services industries
- Planning and managing portfolios of complex capital projects that require dozens of teams and thousands of workers
- Optimizing organizations in engineering, product development, marketing, manufacturing, research, construction and business administration

Account for the Organization's Capabilities

SimVision compensates for several “blind spots” in critical path method (CPM) tools:

- Skills, experience, leadership, and culture all affect productivity and quality. CPM tools cannot take these organizational characteristics into account. A man-hour is simply a man-hour. SimVision models organizational properties and behaviors.
- Good communication and coordination are critical for business success and consume substantial efforts. CPM tools have no means to quantify the amount or quality of this work, especially in massively parallel projects. SimVision quantifies the efficiency and effectiveness of team communication.
- Unplanned rework is a part of every business process. In a CPM plan, rework allowances are based solely on the judgement of the planner. In SimVision, rework is a function of the organization and work.

SimVision models couple the organization's qualities and capabilities with the work plan to quantify outcomes and set more realistic expectations.

Easy to Use

SimVision is a mature and stable commercial software package. Using a sophisticated graphical user interface, you build simulation models with smart objects that represent tasks, milestones and people. If you know how to use flowcharting tools such as Visio®, you know how to use SimVision. Complex project or business models can be constructed in just a few hours.

Academic Products and Services

ePM offers products and services that enable you to easily incorporate organization simulation into your syllabus.

Training and Technical Support

We train professors and teaching assistants in all facets of our SimVision methodology including software operation; model design, development and validation; interpreting simulation results; preparing lectures, laboratories and student exercises. We provide personalized technical and application support.



Instructional Materials

Our Instructor's Toolkit is a guide for designing and using SimVision models in education. Instructors also receive a number of self-contained lessons for students to use in laboratories or independent study. Our lesson plan package includes:

- Solving Organization Development Problems
- Organization Design and Optimization
- Team Information Processing Capacity
- Managing Matrix Organizations
- Industrial Case Studies and Student Exercises

Professional Collaboration

ePM's organization engineering consultants routinely serve as guest lecturers who bring real-world industrial experience to your classroom. We are also available to help you develop custom models and teaching materials.

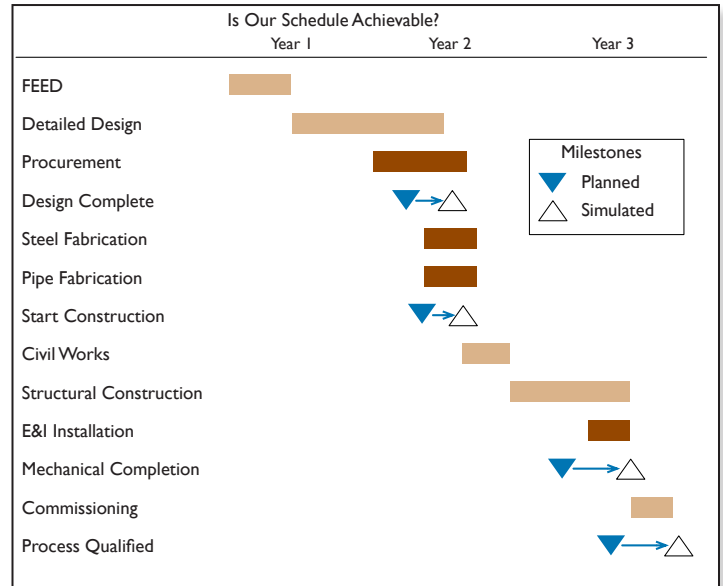
Licensing Program

We offer a two-tier technology licensing program:

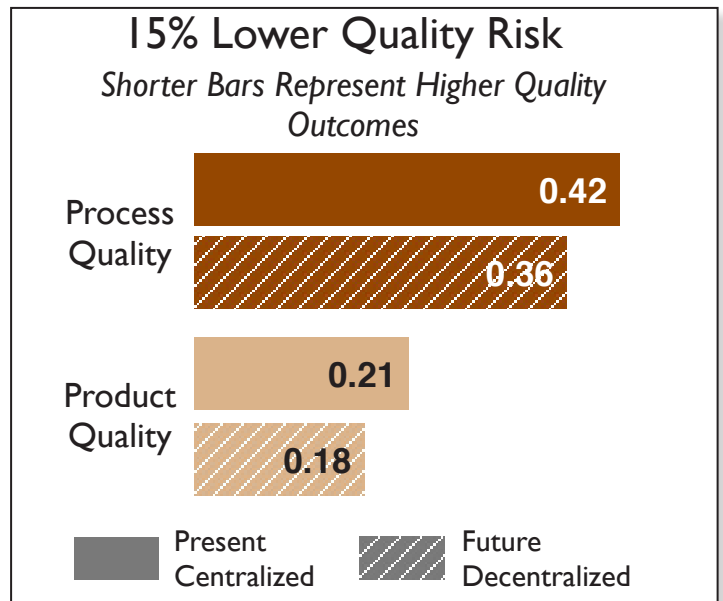
- A single Professor License entitles you to technical support, software updates, and use of ePM's instructional materials
- Inexpensive student licenses are issued for a single term or a full year to suit your needs



SimVision models quantify the non-value-adding work, or "drag," and facilitate the design of a more efficient organization.



Simulation models enable you to make realistic plans that account for the team's true abilities.



Improving the quality of processes and work products increases reliability and revenue

For More Information

Please visit our web site at www.epm.cc or e-mail academic@epm.cc to

- Discuss licensing and support programs
- Arrange a demonstration
- Request an evaluation copy of SimVision
- Preview our instructional materials
- Read industrial case studies

technology 003 revised 26 August 2010