

SimVision® Quick Start Guide

How to Install and Authorize SimVision Organization Simulation Software

Minimum System Requirements

SimVision requires Windows XP, Vista or 7, 70 MB of free hard disk space, and at least 512 MB of RAM.

Verify an Installed Version

To verify your installed version of SimVision, launch the application and select *Help > About SimVision...* The installed version is also found in the *Authorize SimVision* dialog box.

Remove a Prior Installed Version

Remove an outdated installed version of SimVision before installing the latest release. Run the *Uninstall SimVision* application located in your Windows Start Menu at *Programs/ePM/SimVision xx/*.

Download the Application Installer

Request access credentials at support.epm.cc. When you receive an e-mail with your user name and password, return to support.epm.cc and download the SimVision installer to your computer's desktop.

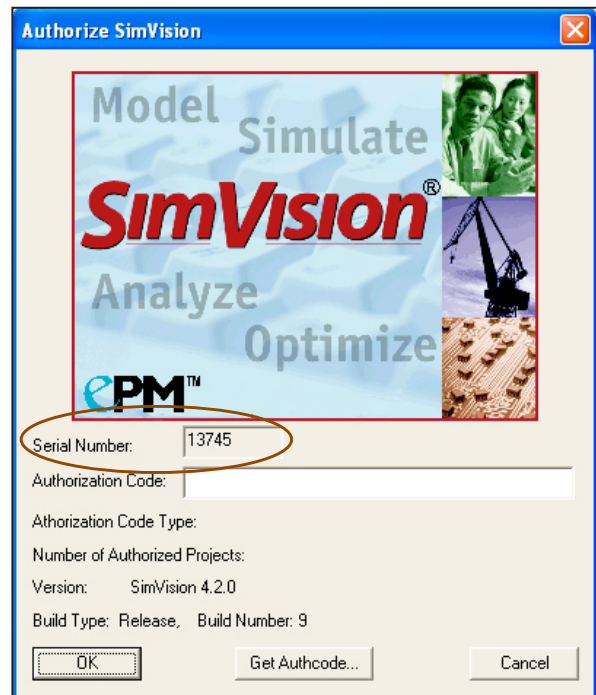
Install and Authorize SimVision

Launch the SimVision installer (*SimVision xx setup.exe*) and follow the on-screen instructions.

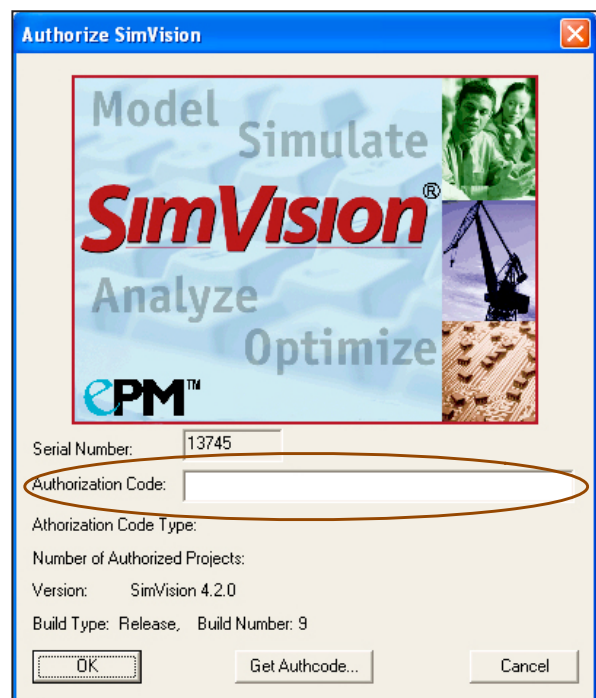
Open SimVision. For a default installation, the application will be in your Windows Start Menu at *Programs/ePM/SimVision xx/*.

The *Authorize SimVision* dialog box appears every time an unlicensed copy of the application is opened. Note your unique serial number and click the *Get Authcode...* button in the dialog box. This will open the *Authcode Request Form* in your default web browser. Complete the form being sure to enter your serial number exactly as it appears in the *Authorize SimVision* dialog box.

You will receive your authorization code via e-mail, usually within two business days. Copy the authorization code in



Note your unique serial number before you click the *Get Authcode ...* button



Copy your authorization code from the e-mail and paste it into the field in the dialog box



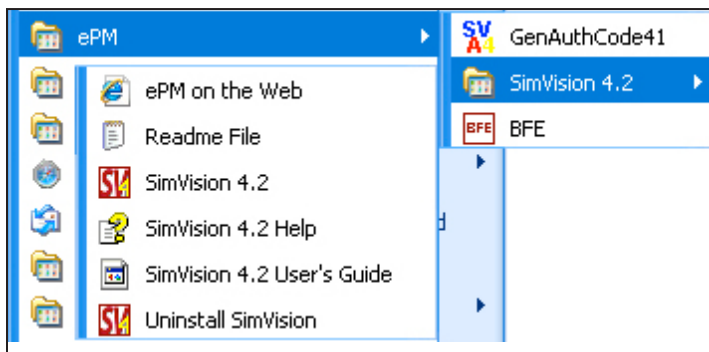
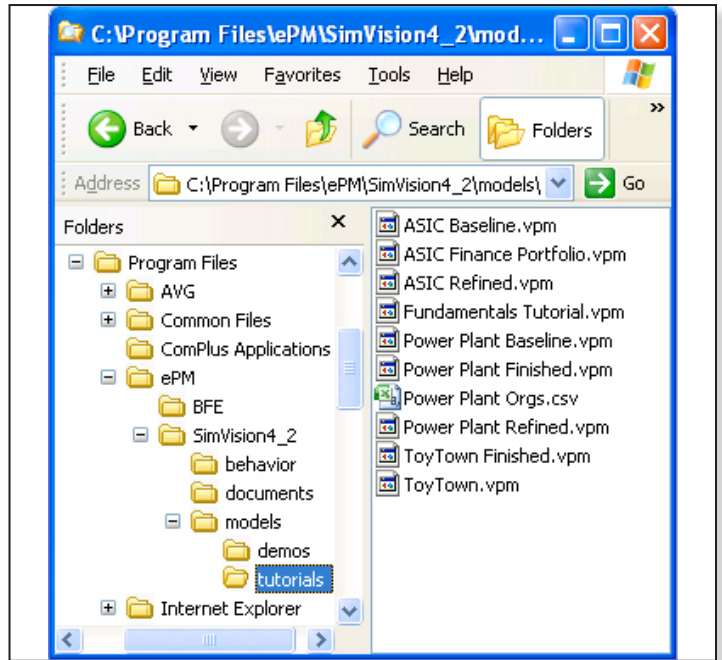
the e-mail, start SimVision, and paste the code into the field in the *Authorize SimVision* dialog box.

Installed Items

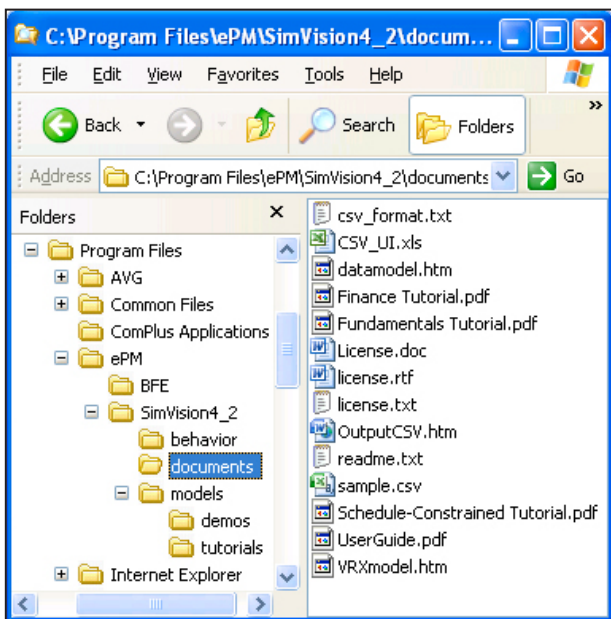
In a typical installation, the SimVision installer places several files on your hard disk. It will make a new folder in your Windows Start Menu that includes:

- The SimVision application
- The ReadMe File
- A link to ePM's web site
- SimVision Help
- The SimVision User's Guide
- The Uninstall SimVision application

Tutorials, the User Guide, and other support documents are installed in *Program Files/ePM/SimVisionxx/documents*.



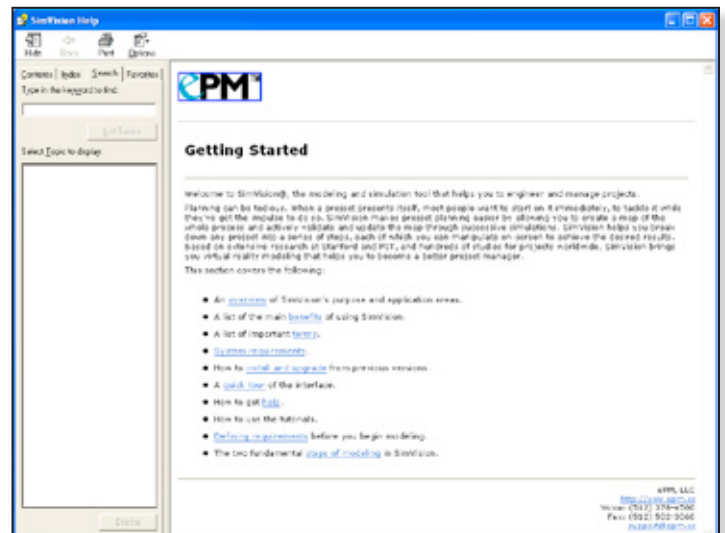
The installer creates a new ePM folder in your Start Menu



Support documents include a user guide and tutorials

In-line Help

SimVision includes an extensive, context-sensitive in-line help system that explains many basic and advanced modeling, analysis, and troubleshooting concepts. Access it directly from within the SimVision application by selecting *Help > SimVision Help*.



If You Need Assistance

If you encounter an installation problem that you cannot resolve with the information in this guide, please e-mail our technical support team at support@epm.cc.

technology 002 revised 31 January 2012